

Technical Manual

Two-component resin for soil stabilization and industrial floorings

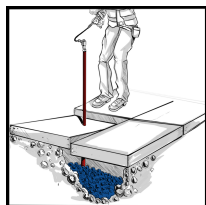
Liquid, two-component polyurethane-polyisocyanate-silicate resin for injections and quick repairs. When cured, it forms a semi-rigid, moisture-resistant and environmentally neutral mass that can withstand changing weather conditions.

Properties

- ❖ Short processing and curing time
- ❖ High tolerance to moisture in the substrate, no foaming
- ❖ Excellent wettability and penetration into porous substrates
- ❖ Non-flammable with high chemical, thermal, and mechanical resistance



Areas of application



- ❖ Soil stabilization
- ❖ Filling and stabilizing under plates
- ❖ Sealing of sewer connections
- ❖ Stabilizing / sealing / strengthening injections for walls and other building structures.

Product specifications

	Component A	Component B	Mixture
Colour	Transparent	Dark brown	Beige
Viscosity (20 °C)	300 mPas	200 mPas	250 mPas
Density (20 °C)	1,45 g/cm ³	1,10 g/cm ³	1,30 g/cm ³
Volume mixing ratio A / B	100 / 100		
Mixing ratios A / B by weight	100 / 75		

Optional additional products

- ❖ Hammpack® PI-Cleaner - for cleaning injection pumps
- ❖ 2K / 3K injection pump
- ❖ Hammpack® injection packers / injection lances

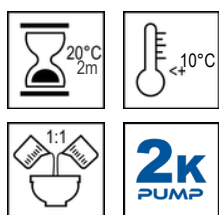
Preparatory work

- ❖ This product is intended for professional use only
- ❖ Before starting the injection process, the condition of the object must be analyzed
- ❖ The substrate must be stable and compact, and should not contain loose elements or substances that reduce adhesion, such as grease, oil, etc.
- ❖ Drill the holes correctly, depending on the work being done
- ❖ Install the injection packers / lances

Resin preparation

- ❖ Before starting the application, both components should be at a temperature of 10°C - 30°C
- ❖ Mix the quantities so that they can be processed quickly
- ❖ Fresh resin has significantly lower viscosity, which makes it easier to spread in the structure

Instructions for use



Temperature [° C]	10 °C	15 °C	20 °C	25 °C
Processing time [min.]	4 min.	3 min.	2 min.	1,5 min.
Curing time [min.]	30 min.	20 min.	15 min.	5 min.

- ❖ Prepare the pump for application according to the manufacturer's recommendations
- ❖ The pressure at which the resin will be applied depends on the structure and the expected result.

Cleaning after work

- ❖ Clean the pump and equipment using Hammpack® PI-CLEANER.
- ❖ During cleaning, observe the appropriate safety conditions.
- ❖ When the cleaning agent comes out of the injection hose, rinse it with an appropriate amount of Hammpack® PI-SAVER preservative.

Storage Shelf life

- ❖ Store in a dry place at 10°C - 30°C.
- ❖ Shelf life is 12 months from the production date in the original, unopened packaging. After opening, the product's lifespan decreases rapidly.

Safety

- ❖ Wear protective goggles, gloves, and clothing.
- ❖ Avoid contact with skin and eyes.
- ❖ In case of contact with eyes, rinse thoroughly with clean water and consult a doctor.
- ❖ In case of contact with skin, rinse abundantly with water.
- ❖ For all other information, consult the product safety data sheet.

